



Boat Details

Donatan	FOUNTAIN PAJOT
Liman	Mykonos
Destinasyon	Atina, Kiklad Adaları
Uzunluk	15.0 m / 50.0 ft
Built / Refit	2016
Kabin Sayısı	4
Kabinler	4 Double
Yolcular	8
Personel	3
Düşük Sezon May, October	Haftalık €14.550
Orta Sezon June, September	Haftalık €14.550
Yüksek Sezon July, August	Haftalık €16.670







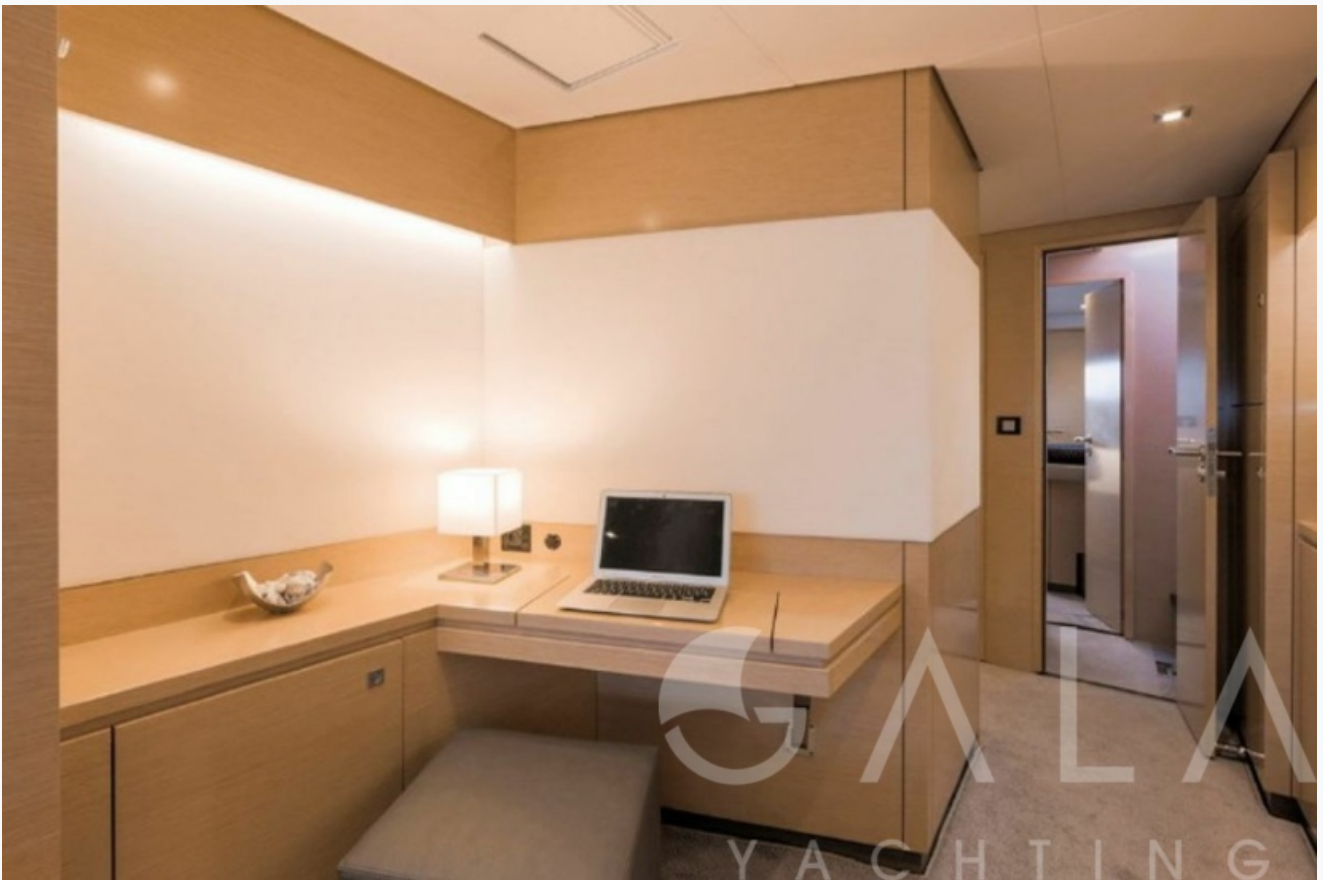












Ana Özellikler

Built / Refit	2016
Donatan	FOUNTAIN PAJOT
Liman	Mykonos
Uzunluk	15.0 m / 50.0 ft
Genişlik	7.92 m / 26 ft
Su Kesimi	1.26 m / 4.12 ft
Ana Makine(ler)	Volvo 2 x D2 75Hp
Jeneratör(ler)	Yes
Gövde	GRP
Su Kapasitesi	700 LT~

Konaklama

Kabinler
4 Double
Yolcular
8
Personel
3
Banyo
Ensuite with shower cells
Klima sistemi
Yes
TV Sistemi
Sadece salonda
Müzik Sistemi
Salonda, Güverte hoparlörleri,
Diğer Ekipman
WiFi internet

Tenders & Toys

Destinations & Prices

Seyir Bölgeleri

Atina, Kiklad Adaları

Kiralama Fiyatları

€14.550 per week (Düşük Sezon: May, October)

€14.550 per week (Orta Sezon: June, September)

€16.670 per week (Yüksek Sezon: July, August)

Kiralama Şartları

MYBA Terms:

The Charter Fee includes the charter of the yacht with all its equipment in working order, tools, stores, cleaning material and basic consumable stores for engine-room, deck and cabins, etc., the crew's wages, food and the insurance of the yacht for marine risk and third party claims and the crew for employer's liability insurance.

VAT 12 % is not included in charter rate

APA (Advance Provisioning Allowance): The Charterer will be charged extra, at cost to the yacht, for all other expenses, which is covered by the APA , 30 % of the charter fee. These expenses include fuel for the yacht, fuel for the ski-boats or other tenders, food for the charterers, wines, beers, spirits and soft drinks for the Charterers, other consumable stores, berthing dues and other harbour charges away from the yacht's own berth, hire costs of special equipment placed on board at the request of the Charterer.

