



## Boat Details

Donatan	PRINCESS YACHTS
Liman	İstanbul
Destinasyon	Türkiye, On İki Adalar
Uzunluk	22.0 m / 72.0 ft
Built / Refit	2000
Kabin Sayısı	3
Kabinler	1 Master, 1 Vip, 1 Twin
Yolcular	6
Personel	2
Düşük Sezon May, October	Haftalık €10.500
Orta Sezon June, September	Haftalık €14.000
Yüksek Sezon July, August	Haftalık €17.500

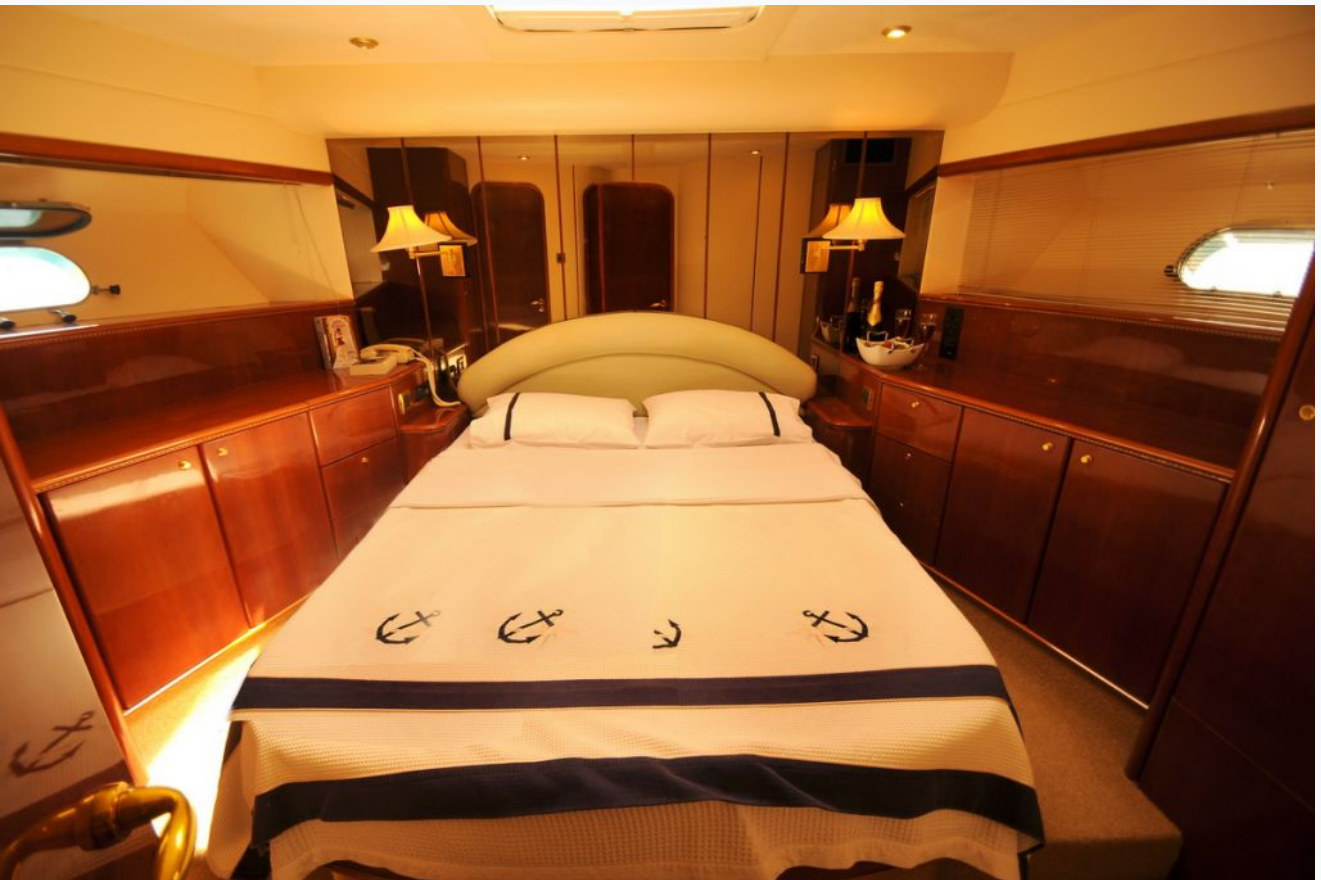
Features





















## Ana Özellikler

Built / Refit	2000
Donatan	PRINCESS YACHTS
Liman	İstanbul
Uzunluk	22.0 m / 72.0 ft
Genişlik	5 m / 16 ft
Su Kesimi	0 m / 0 ft
Ana Makine(ler)	2 X 1000 HP MAN
Gövde	Fiberglass
Yakıt Kapasitesi	4,500 LT~
Su Kapasitesi	1,600 LT~



## Konaklama

Kabinler	1 Master, 1 Vip, 1 Twin
Yolcular	6
Personel	2
Banyo	Ensuite with shower cells
Tuvalet tipi	Electric vacuum flush
Klima sistemi	Yes
Gece Klima Kullanımı	All night
TV Sistemi	Sadece salonda
Müzik Sistemi	Salonda, Güverte hoparlörleri
Diğer Ekipman	Buz makinesi, Filtre kahve makinesi, İnternet bağlantısı

## Tenders & Toys

Güverte Ekipmanları	Güneş şemsiyesi, Güneşlenme minderleri, Güverte duşu, Deniz merdiveni
---------------------	---

## Destinations & Prices

### Seyir Bölgeleri

Türkiye, On İki Adalar

### Kiralama Fiyatları

€10.500 per week (Düşük Sezon: May, October)

€14.000 per week (Orta Sezon: June, September)

€17.500 per week (Yüksek Sezon: July, August)

### Kiralama Şartları

#### Charter Terms:

**The Charter Fee includes** the charter of the yacht with all its equipment in working order, tools, stores, cleaning material and basic consumable stores for engine-room, deck and cabins, etc., the crew's wages, food and the insurance of the yacht for marine risk and third party claims and the crew for employer's liability insurance.

**APA (Advance Provisioning Allowance):** The Charterer will be charged extra, at cost to the yacht, for all other expenses, which is covered by the APA , 20-40 % of the charter fee depending on the yacht and the charter period. These expenses include fuel for the yacht, fuel for the ski-boats or other tenders, food for the charterers, wines, beers, spirits and soft drinks for the Charterers, other consumable stores, berthing dues and other harbour charges away from the yacht's own berth, hire costs of special equipment placed on board at the request of the Charterer.

**Crew's Gratuity** is extra and usually 5-10 % of the Charter Fee.

