



Boat Details

Builder	TANSU YACHTS
Base Port	San Remo
Destination	Italy, France, Spain
Length	38.0 m / 125.0 ft
Built / Refit	2014 / 2020
Cabins Total	4
Cabins	1 Master, 1 Vip, 2 Twin
Guests	8
Crew	5
Speed	12-15 Knots
Low Season May, October	Per Week €100,000
Mid Season June, September	Per Week €120,000
High Season July, August	Per Week €120,000









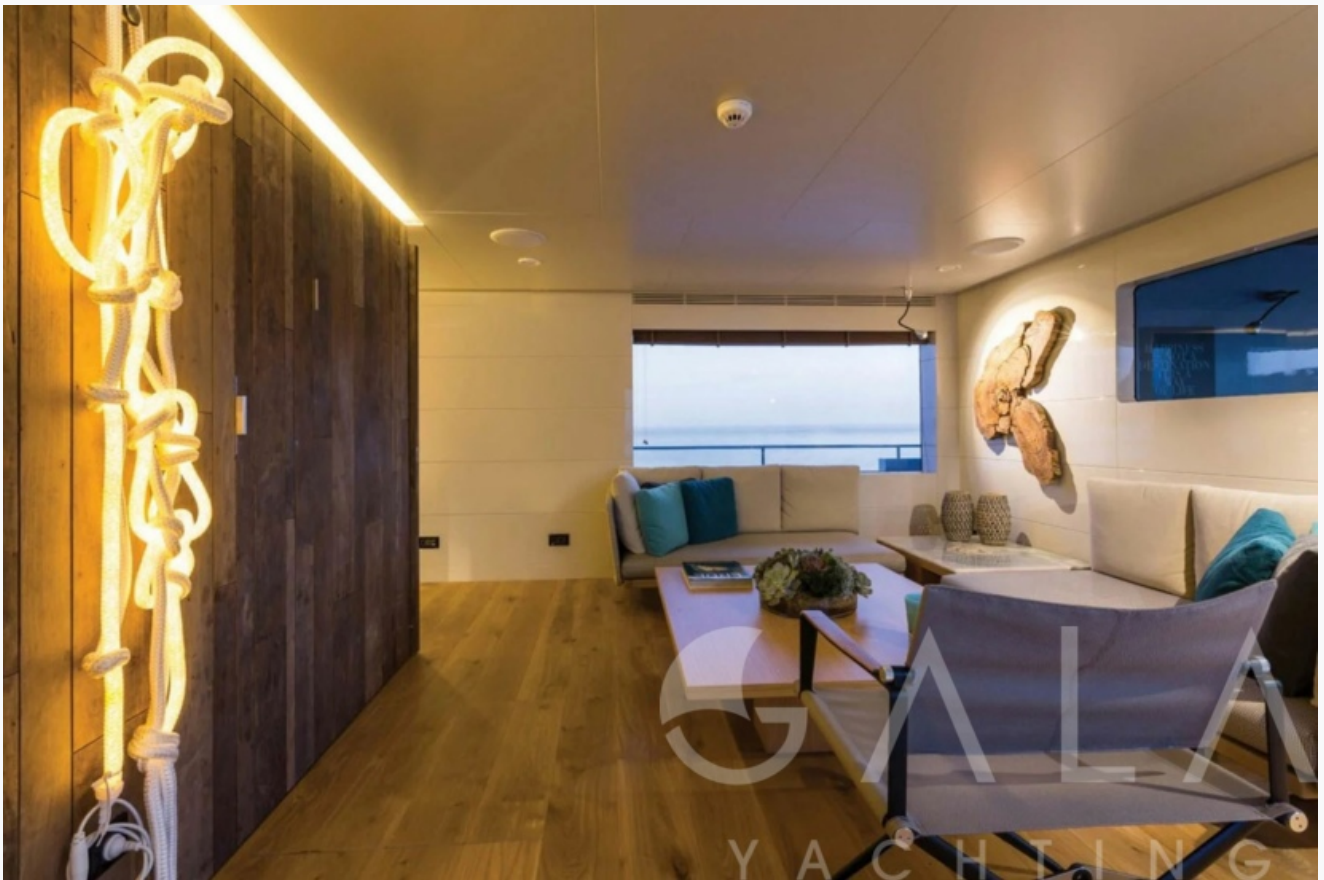














Specifications

Built / Refit

2014 / 2020

Builder

TANSU YACHTS

Base Port

San Remo

Length

38.0 m / 125.0 ft

Beam

7.44 m / 24 ft

Draft

1.82 m / 6 ft

Speed

12-15 Knots

Main Engine(s)

2 x 715 Hp CAT

Fuel Consumption

200 lt at cruising

Generator(s)

Nothorn Lights 1 X 55 KW / 1 X 32 KW

Hull

Composite

Fuel Capacity

22,000 LT~

Water Capacity

4,100 LT~

Accommodation

Cabins

1 Master, 1 Vip, 2 Twin

Guests

8

Crew

5

Bathroom

Ensuite with shower cells

Toilet type

Electric vacuum flush

Air-conditioning

Yes, individually controlled in all cabins

A/C Use during night

All night

TV System

Sattelite TV, In Salon and Master cabin

Music System

In salon, Deck speakers, iPod connected Bose in salon and all decks, Bose Home Theatre in Salon

Other Equipment

Ice machine, Filter coffee machine, WiFi internet

Tenders & Toys

Tenders

5.50m Novurania 550DL tender, 4.30m Novurania 400DL tender

Water Toys

Water-ski, Wakeboard

Deck Equipment

Zero Speed Stabilizers

Destinations & Prices

Cruising Areas

Italy, France, Spain

Charter Prices

€100,000 per week (Low Season: May, October)

€120,000 per week (Mid Season: June, September)

€120,000 per week (High Season: July, August)

Charter Terms

The Charter Fee includes the charter of the yacht with all its equipment in working order, tools, stores, cleaning material and basic consumable stores for engine-room, deck and cabins, etc., the crew's wages, food and the insurance of the yacht for marine risk and third party claims and the crew for employer's liability insurance.

APA (Advance Provisioning Allowance): The Charterer will be charged extra, at cost to the yacht, for all other expenses, which is covered by the APA , 20-40 % of the charter fee depending on the yacht and the charter period. These expenses include fuel for the yacht, fuel for the ski-boats or other tenders, food for the charterers, wines, beers, spirits and soft drinks for the Charterers, other consumable stores, berthing dues and other harbour charges away from the yacht's own berth, hire costs of special equipment placed on board at the request of the Charterer.

Crew's Gratuity is extra and usually 5-10 % of the Charter Fee.

