



Boat Details

Builder	SUNSEEKER
Base Port	Bodrum
Destination	Turkey, Dodacanese Islands
Length	20.0 m / 66.0 ft
Built / Refit	1999 / 2020
Cabins Total	3
Cabins	1 Master, 2 Twin
Guests	6
Crew	2
Speed	33 Knots
Low Season May, October	Per Week \$14,000
Mid Season June, September	Per Week \$17,000
High Season July, August	Per Week \$19,000







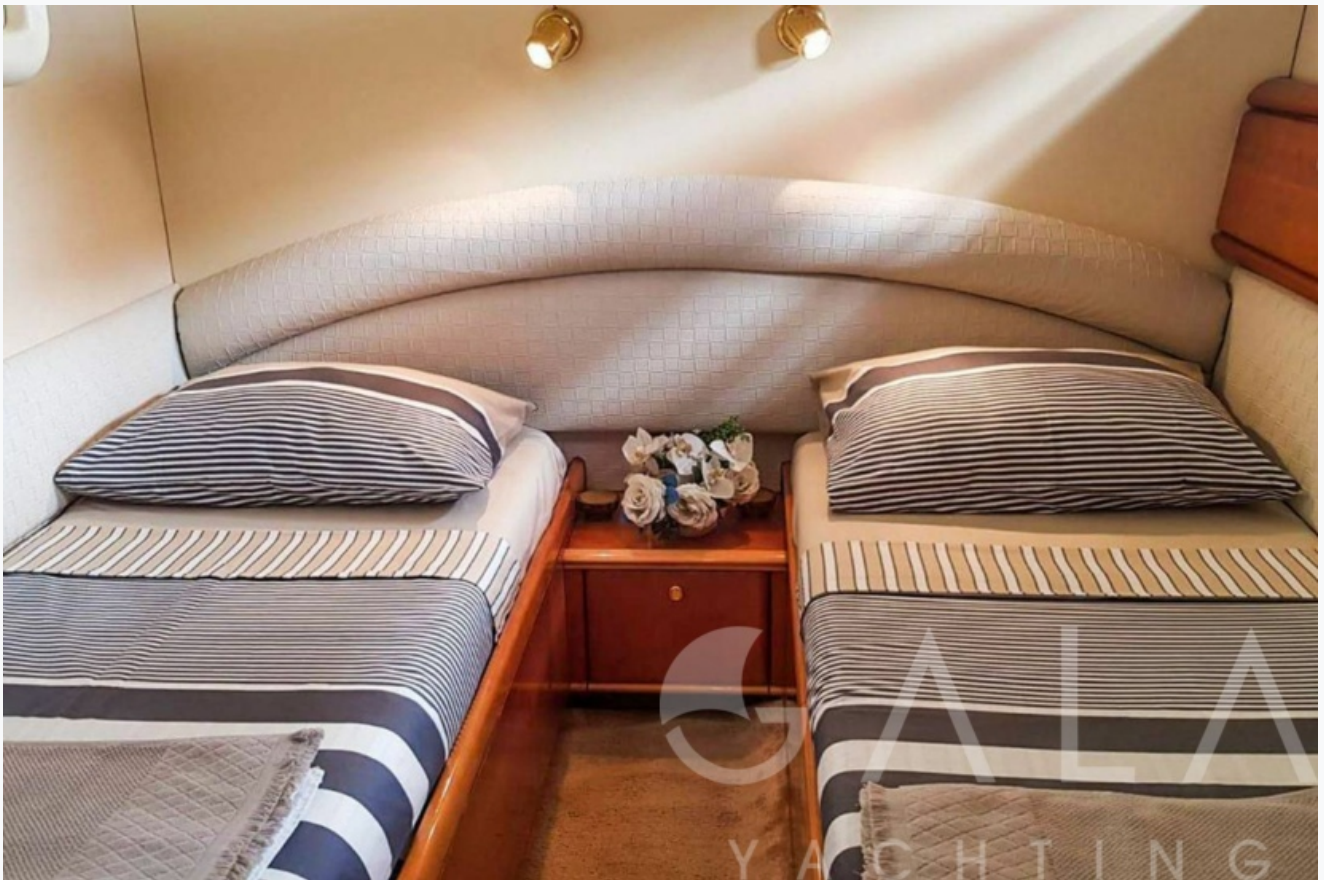


















Specifications

Built / Refit
1999 / 2020
Builder
SUNSEEKER
Base Port
Bodrum
Length
20.0 m / 66.0 ft
Beam
5.36 m / 18 ft
Draft
1.5 m / 5 ft
Speed
33 Knots
Main Engine(s)
2x Man 720 Hp
Hull
Fiberglass
Fuel Capacity
4,000 LT~

Accommodation

Cabins
1 Master, 2 Twin
Guests
6
Crew
2
Bathroom
Ensuite with shower cells
Toilet type
Electric vacuum flush
Air-conditioning
Yes
A/C Use during night
All night

Tenders & Toys

Destinations & Prices

Cruising Areas
Turkey, Dodacanese Islands
Charter Prices
\$14,000 per week (Low Season: May, October)
\$17,000 per week (Mid Season: June, September)
\$19,000 per week (High Season: July, August)
Charter Terms
<p>The Charter Fee includes the charter of the yacht with all its equipment in working order, tools, stores, cleaning material and basic consumable stores for engine-room, deck and cabins, etc., the crew's wages, food and the insurance of the yacht for marine risk and third party claims and the crew for employer's liability insurance.</p> <p>APA (Advance Provisioning Allowance): The Charterer will be charged extra, at cost to the yacht, for all other expenses, which is covered by the APA , 20-40 % of the charter fee depending on the yacht and the charter period. These expenses include fuel for the yacht, fuel for the ski-boats or other tenders, food for the charterers, wines, beers, spirits and soft drinks for the Charterers, other consumable stores, berthing dues and other harbour charges away from the yacht's own berth,hire costs of special equipment placed on board at the request of the Charterer.</p> <p>Crew's Gratuity is extra and usualy 5-10 % of the Charter Fee.</p>

