



Boat Details

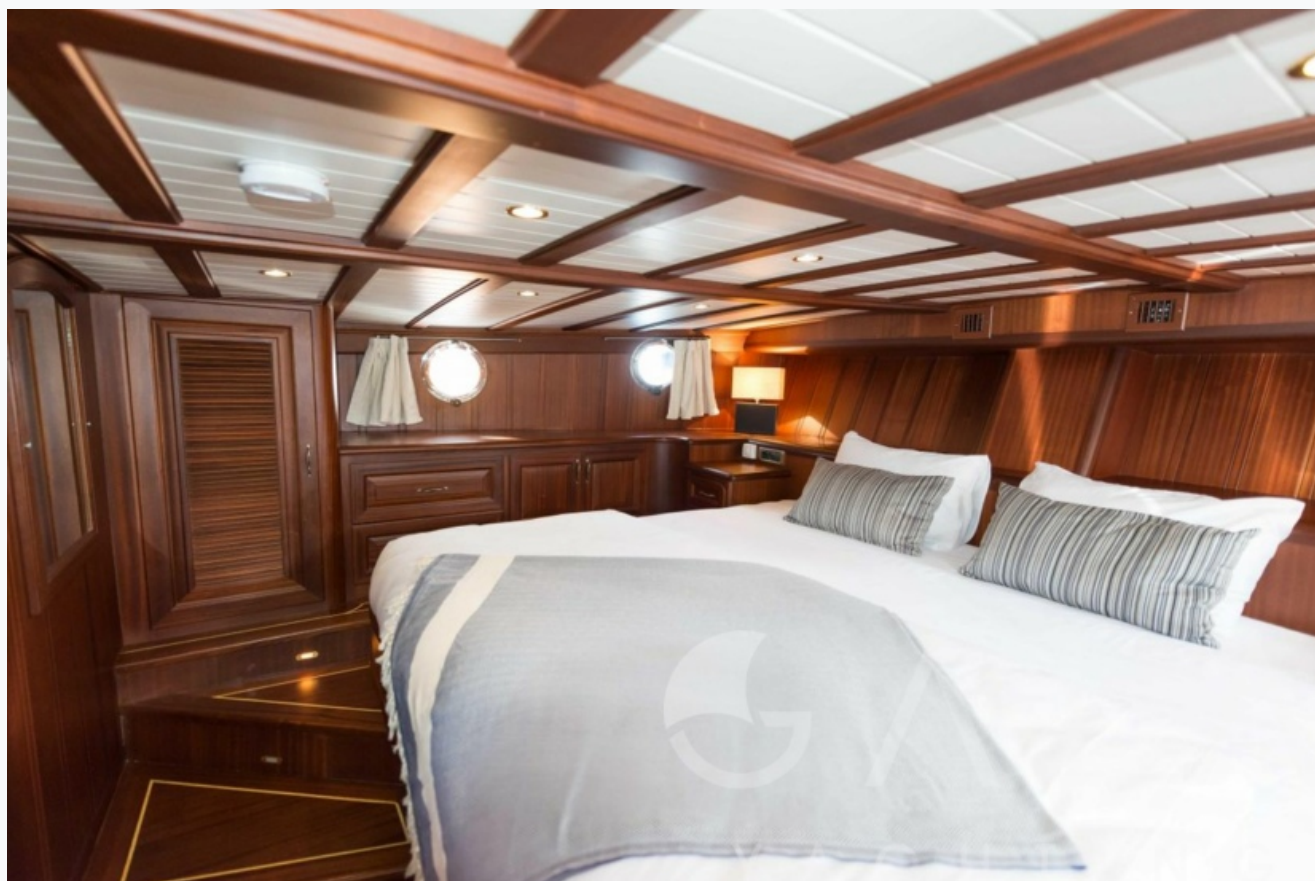
Builder	BODRUM SHIPYARD
Base Port	Bodrum
Destination	Turkey
Length	21.5 m / 71.0 ft
Built / Refit	1998 / 2023
Cabins Total	3
Cabins	3 Master
Guests	6
Crew	3
Speed	9 Knots
Low Season May, October	Per Week €8,400
Mid Season June, September	Per Week €10,500
High Season July, August	Per Week €13,650

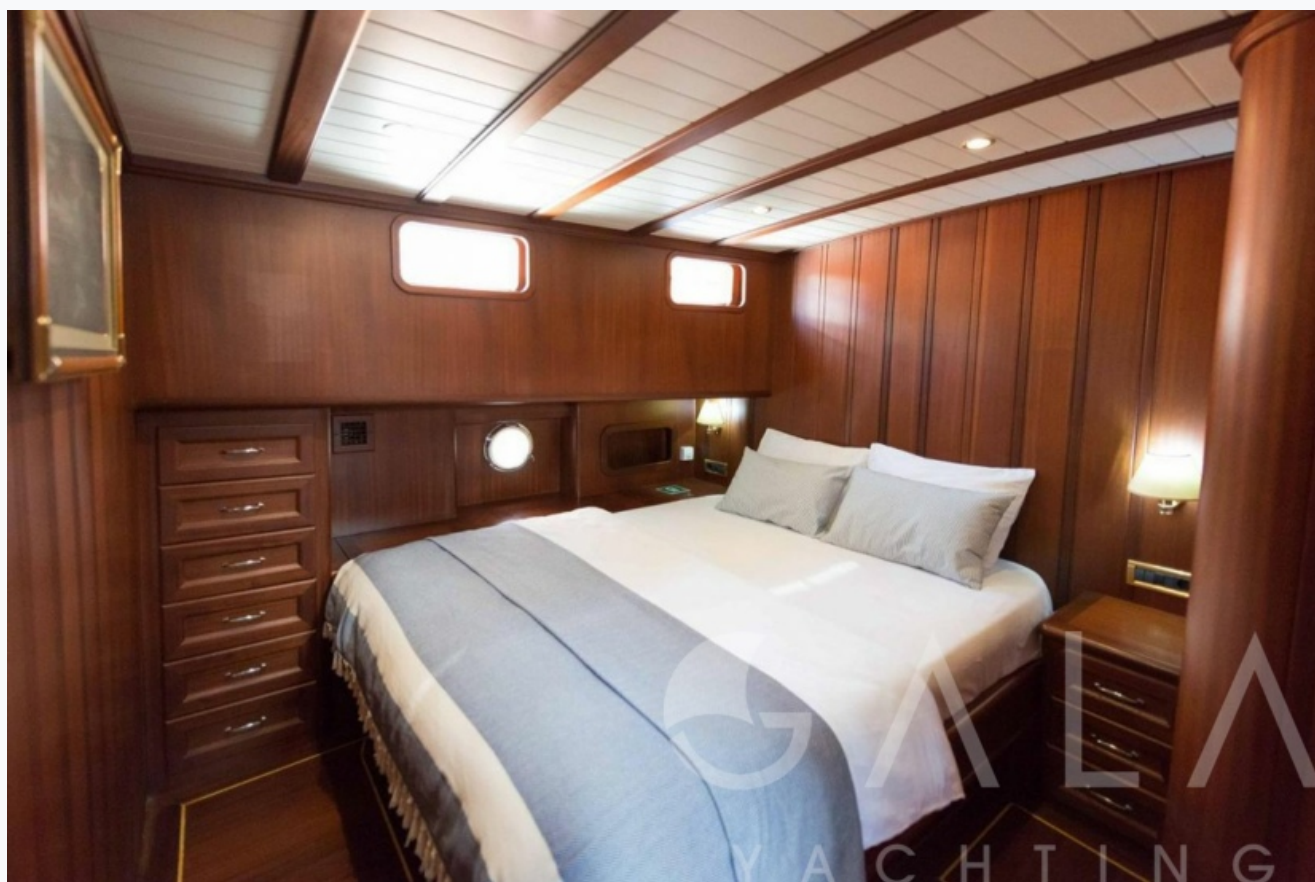














Specifications

Built / Refit

1998 / 2023

Builder

BODRUM SHIPYARD

Base Port

Bodrum

Length

21.5 m / 71.0 ft

Beam

5.7 m / 18 ft

Draft

0 m / 0 ft

Speed

9 Knots

Main Engine(s)

380 HP VOLVO TURBO

Generator(s)

22 KW ONAN

Hull

Laminated wood , cold-molded epoxy

Fuel Capacity

2,000 LT~

Water Capacity

2,000 LT~

Accommodation

Cabins
3 Master
Guests
6
Crew
3
Bathroom
Ensuite with shower cells
Toilet type
Electric vacuum flush
Air-conditioning
Yes
TV System
In salon only
Music System
In salon, All cabins
Other Equipment
DVD player, Filter coffee machine, Hair dryers, WiFi internet

Tenders & Toys

Tenders
TENDER WITH 60 HP
Water Toys
Water- Ski, 2x Canoes, 2x Ringos, SUP
Deck Equipment
Snorkelling equipment, Fishing tackle, Sun mattresses, Deck shower, Sea ladder
Sail Equipment
2 / GENOA, JIB, MAIN, MIZZEN

Destinations & Prices

Cruising Areas

Turkey

Charter Prices

€8,400 per week (Low Season: May, October)

€10,500 per week (Mid Season: June, September)

€13,650 per week (High Season: July, August)

Charter Terms

Prices includes; Fuel for the yacht, Crew Wages, Insurance, Turkish harbour fees, Airport transfers

Prices excludes; VAT tax, food and drinks €60 - €100 per person per day will be charged for FULL BOARD meals and soft drinks, other Alcoholic drinks and wines will be charged per bottle at supermarket price. You can also bring your favorite spirits

Crew's Gratuity is extra and usually 5-10 % of the Charter Fee.

