



Boat Details

Base Port	Split
Destination	Croatia
Length	37.3 m / 122.0 ft
Built / Refit	2011
Cabins Total	6
Cabins	5 Double, 1 Twin
Guests	12
Crew	6
Speed	10 Knots
Low Season May, October	Per Week €42,000
Mid Season June, September	Per Week €46,000
High Season July, August	Per Week €49,000







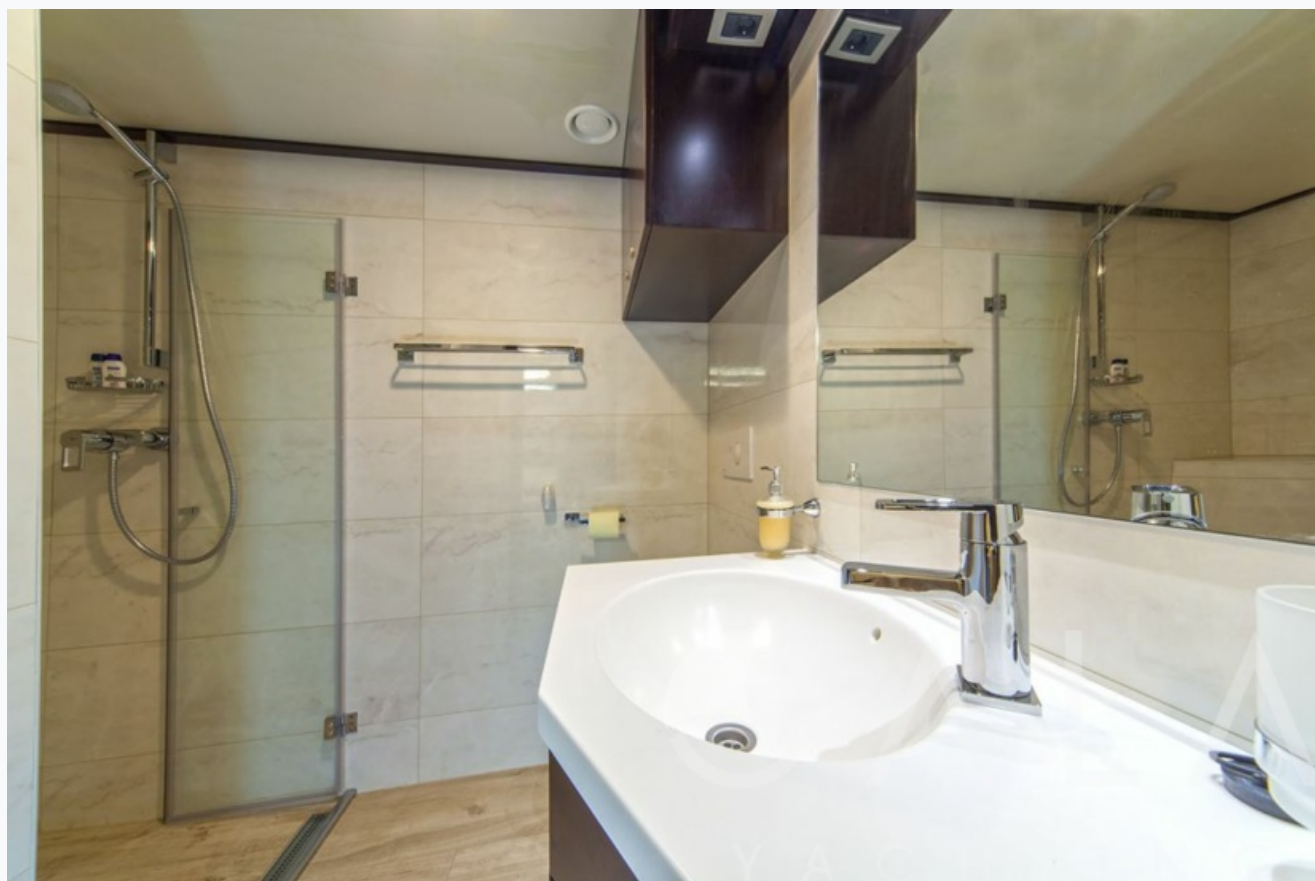
















Specifications

Built / Refit
2011
Base Port
Split
Length
37.3 m / 122.0 ft
Beam
8.3 m / 27 ft
Draft
3.3 m / 11 ft
Speed
10 Knots
Main Engine(s)
2 x Doosan 265 kw/360 hp
Generator(s)
2x50kW Caterpillar
Hull
Steel
Fuel Capacity
10,000 LT~
Water Capacity
20,000 LT~

Accommodation

Cabins
5 Double, 1 Twin
Guests
12
Crew
6
Bathroom
Ensuite with shower cells
Toilet type
Electric vacuum flush
Air-conditioning
Yes, individually controlled in all cabins
A/C Use during night
All night
TV System
In salon and all cabins, Sattelite TV
Music System
In salon, All cabins, Deck speakers
Other Equipment
Ice machine, DVD player, Filter coffee machine, Wine cooler, Service phone in cabins, Internet connection, Hair dryers, CD/DVD player in each cabin, Safe box in each cabin, SonyPlaystation, Satellite phone

Tenders & Toys

Deck Equipment
Snorkelling equipment, Fishing tackle, Sun awnings, Sun mattresses, Deck shower, Sea ladder, Jacuzzi on deck
Sail Equipment
Full sail equipment

Destinations & Prices

Cruising Areas

Croatia

Charter Prices

€42,000 per week (Low Season: May, October)

€46,000 per week (Mid Season: June, September)

€49,000 per week (High Season: July, August)

