



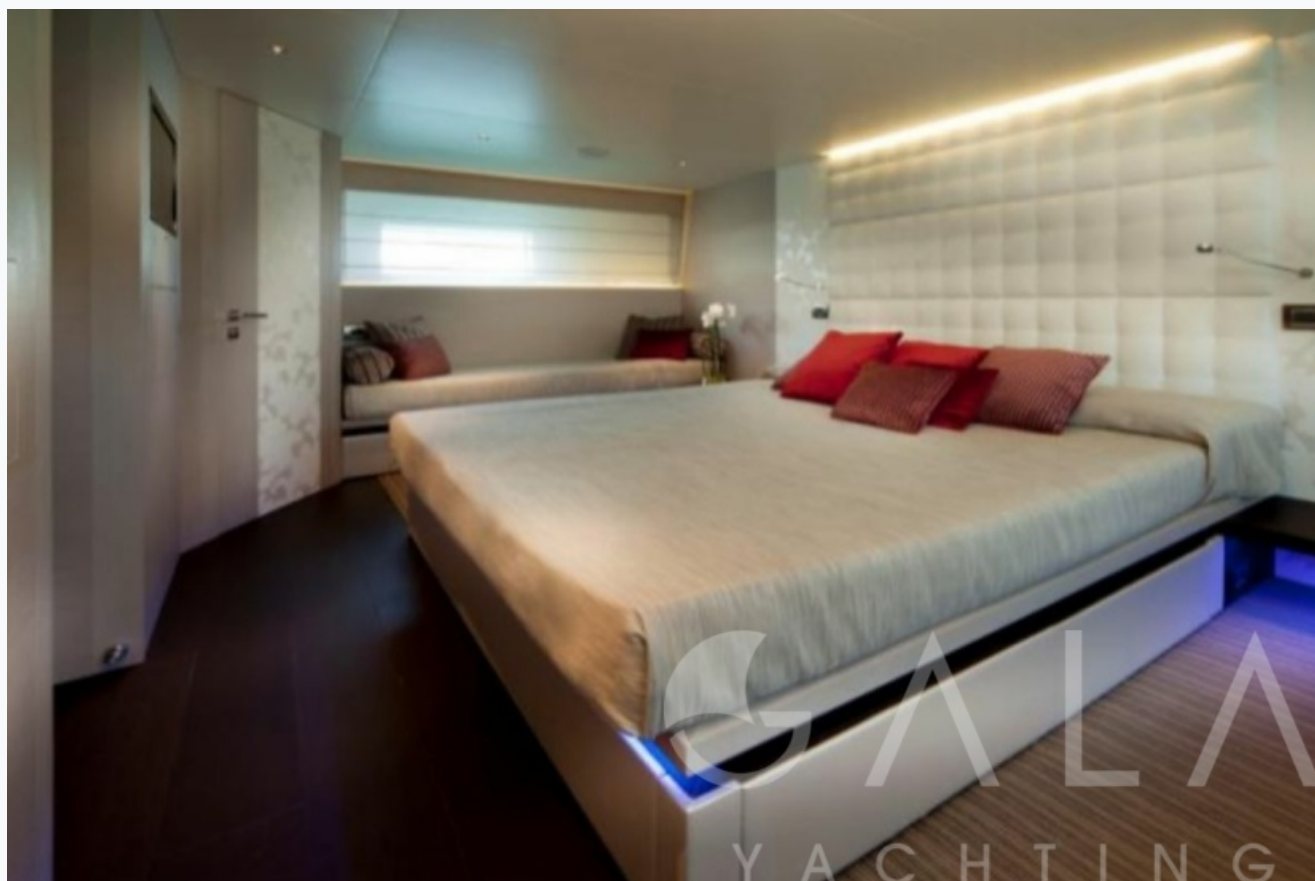
Boat Details

Builder	TECNOMAR
Base Port	Athens
Destination	Athens, Ionian Islands, Cyclades
Length	30.6 m / 100.0 ft
Built / Refit	2011
Cabins Total	5
Cabins	1 Master, 2 Double, 2 Twin, 2 Bunkbed
Guests	10
Crew	6
Speed	20 Knots
Low Season May, October	Per Week €42,000
Mid Season June, September	Per Week €42,000
High Season July, August	Per Week €49,000

















Specifications

Built / Refit

2011

Builder

TECNOMAR

Base Port

Athens

Length

30.6 m / 100.0 ft

Beam

6.5 m / 21 ft

Draft

3.3 m / 11 ft

Speed

20 Knots

Main Engine(s)

2 x Diesel CAT 1825 ACERT

Fuel Consumption

500 lt at cruising

Hull

GRP

Accommodation

Cabins
1 Master, 2 Double, 2 Twin, 2 Bunkbed
Guests
10
Crew
6
Bathroom
Ensuite with shower cells
Toilet type
Electric vacuum flush
Air-conditioning
Yes
TV System
In salon and all cabins
Music System
In salon, All cabins, Deck speakers
Other Equipment
CD/DVD player in each cabin, WiFi internet

Tenders & Toys

Tenders
Zodiac 4m with Yamaha 40HP
Water Toys
Jet ski, 2 x Water Skis, Wakeboard, SUP, powerdiveTubes, Banana
Deck Equipment
Snorkelling equipment, Fishing tackle, Jacuzzi on deck

Destinations & Prices

Cruising Areas

Athens, Ionian Islands, Cyclades

Charter Prices

€42,000 per week (Low Season: May, October)

€42,000 per week (Mid Season: June, September)

€49,000 per week (High Season: July, August)

Charter Terms

MYBA Terms:

The Charter Fee includes the charter of the yacht with all its equipment in working order, tools, stores, cleaning material and basic consumable stores for engine-room, deck and cabins, etc., the crew's wages, food and the insurance of the yacht for marine risk and third party claims and the crew for employer's liability insurance.

VAT 12 % is not included in charter rate

APA (Advance Provisioning Allowance): The Charterer will be charged extra, at cost to the yacht, for all other expenses, which is covered by the APA , 30 % of the charter fee. These expenses include fuel for the yacht, fuel for the ski-boats or other tenders, food for the charterers, wines, beers, spirits and soft drinks for the Charterers, other consumable stores, berthing dues and other harbour charges away from the yacht's own berth, hire costs of special equipment placed on board at the request of the Charterer.

