

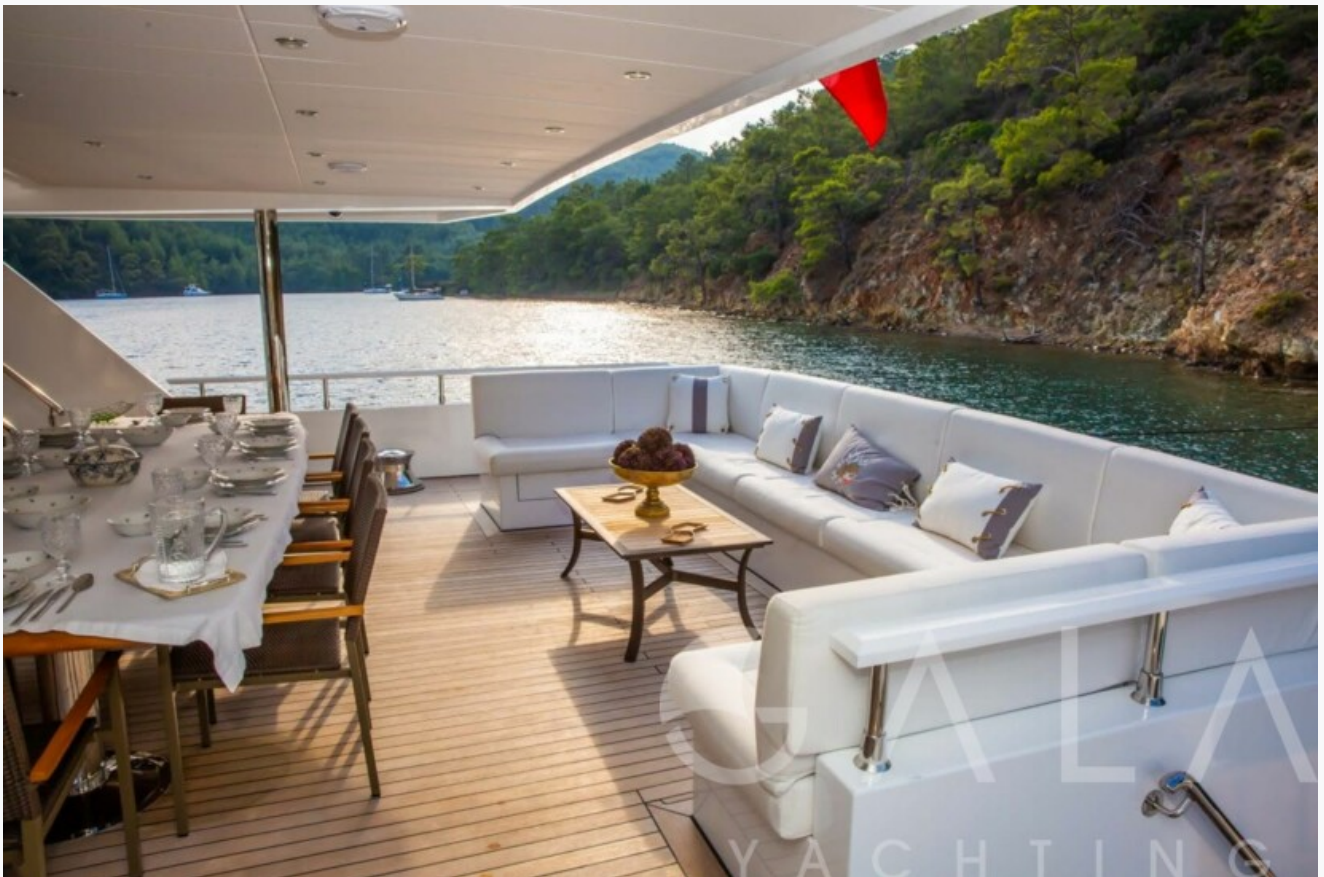


Boat Details

Builder	CUSTOM BUILT		
Base Port	Bodrum		
Destination	Turkey		
Length	47.0 m / 154.0 ft		
Built / Refit	2017 / 2021		
Cabins Total	6		
Cabins	2 Master, 2 Vip, 1 Double, 1 Twin		
Guests	12		
Crew	9		
Speed	14-19 Knots		
Low Season May, October		Per Week	€162,500
Mid Season June, September		Per Week	€175,000
High Season July, August		Per Week	€187,500

Features











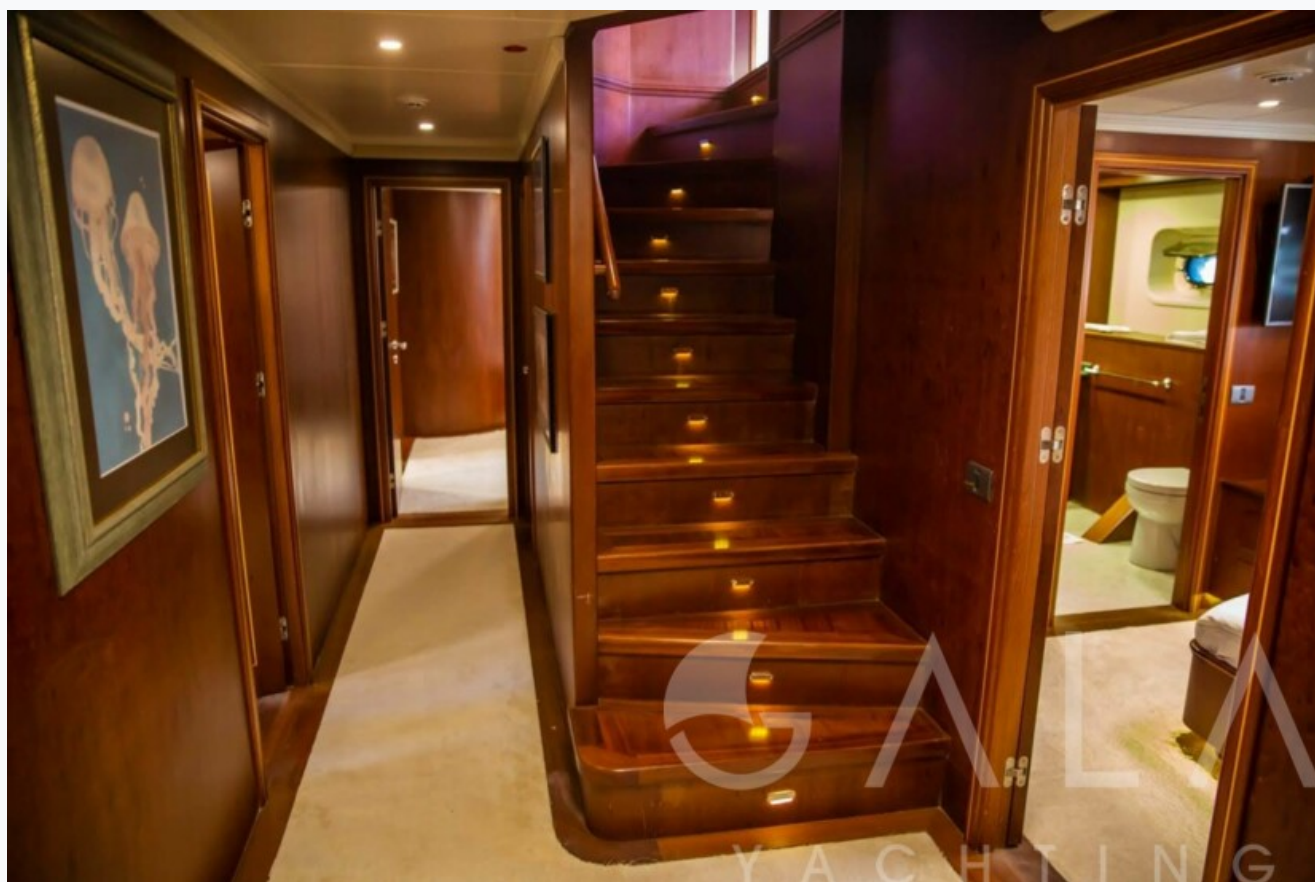




















Specifications

Built / Refit

2017 / 2021

Builder

CUSTOM BUILT

Base Port

Bodrum

Length

47.0 m / 154.0 ft

Beam

8.9 m / 29 ft

Draft

2.8 m / 9 ft

Speed

14-19 Knots

Main Engine(s)

2 x 1860 HP MTU

Generator(s)

2 x 62 Kw Onan, 1 x 27 Kw Onan

Hull

Composite

Fuel Capacity

15,000 LT~

Water Capacity

7,000 LT~

Accommodation

Cabins
2 Master, 2 Vip, 1 Double, 1 Twin
Guests
12
Crew
9
Bathroom
Ensuite with shower cells
Toilet type
Electric vacuum flush
Air-conditioning
Yes
A/C Use during night
All night
TV System
In salon and all cabins, Sattelite TV
Music System
In salon, All cabins, Deck speakers
Other Equipment
Ice machine, Filter coffee machine, WiFi internet

Tenders & Toys

Tenders
Zodiac 7,20m with 150HP Yamaha, Zodiac 3,80m with 40HP Yamaha
Water Toys
JetSki, Sea Bob, 2 x Paddle Board, Canoe, 2 x Ringo, 2 x Sea Bicycle
Deck Equipment
Snorkelling equipment, Fishing tackle, Sun awnings, Sun mattresses, Deck shower, Sea ladder, Massage saloon, Gym equipment on the sundeck, Steam Room, Deck Pool

Destinations & Prices

Cruising Areas

Turkey

Charter Prices

€162,500 per week (Low Season: May, October)

€175,000 per week (Mid Season: June, September)

€187,500 per week (High Season: July, August)

Charter Terms

Charter Terms:

The Charter Fee includes the charter of the yacht with all its equipment in working order, tools, stores, cleaning material and basic consumable stores for engine-room, deck and cabins, etc., the crew's wages, food and the insurance of the yacht for marine risk and third party claims and the crew for employer's liability insurance.

APA (Advance Provisioning Allowance): The Charterer will be charged extra, at cost to the yacht, for all other expenses, which is covered by the APA , 20-40 % of the charter fee depending on the yacht and the charter period. These expenses include fuel for the yacht, fuel for the ski-boats or other tenders, food for the charterers, wines, beers, spirits and soft drinks for the Charterers, other consumable stores, berthing dues and other harbour charges away from the yacht's own berth, hire costs of special equipment placed on board at the request of the Charterer.

Crew's Gratuity is extra and usually 5-10 % of the Charter Fee.

