



### Boat Details

<b>Builder</b>	MENGI YAY
<b>Base Port</b>	Bodrum
<b>Destination</b>	Turkey, Dodacanese Islands, Athens, Ionian Islands, Cyclades
<b>Length</b>	35.0 m / 115.0 ft
<b>Built / Refit</b>	2011
<b>Cabins Total</b>	5
<b>Cabins</b>	2 Master, 2 Vip, 1 Twin
<b>Guests</b>	10
<b>Crew</b>	6
<b>Speed</b>	20-22 Knots
<b>Low Season</b> May, October	Per Week <b>€49,000</b>
<b>Mid Season</b> June, September	Per Week <b>€59,500</b>
<b>High Season</b> July, August	Per Week <b>€65,000</b>







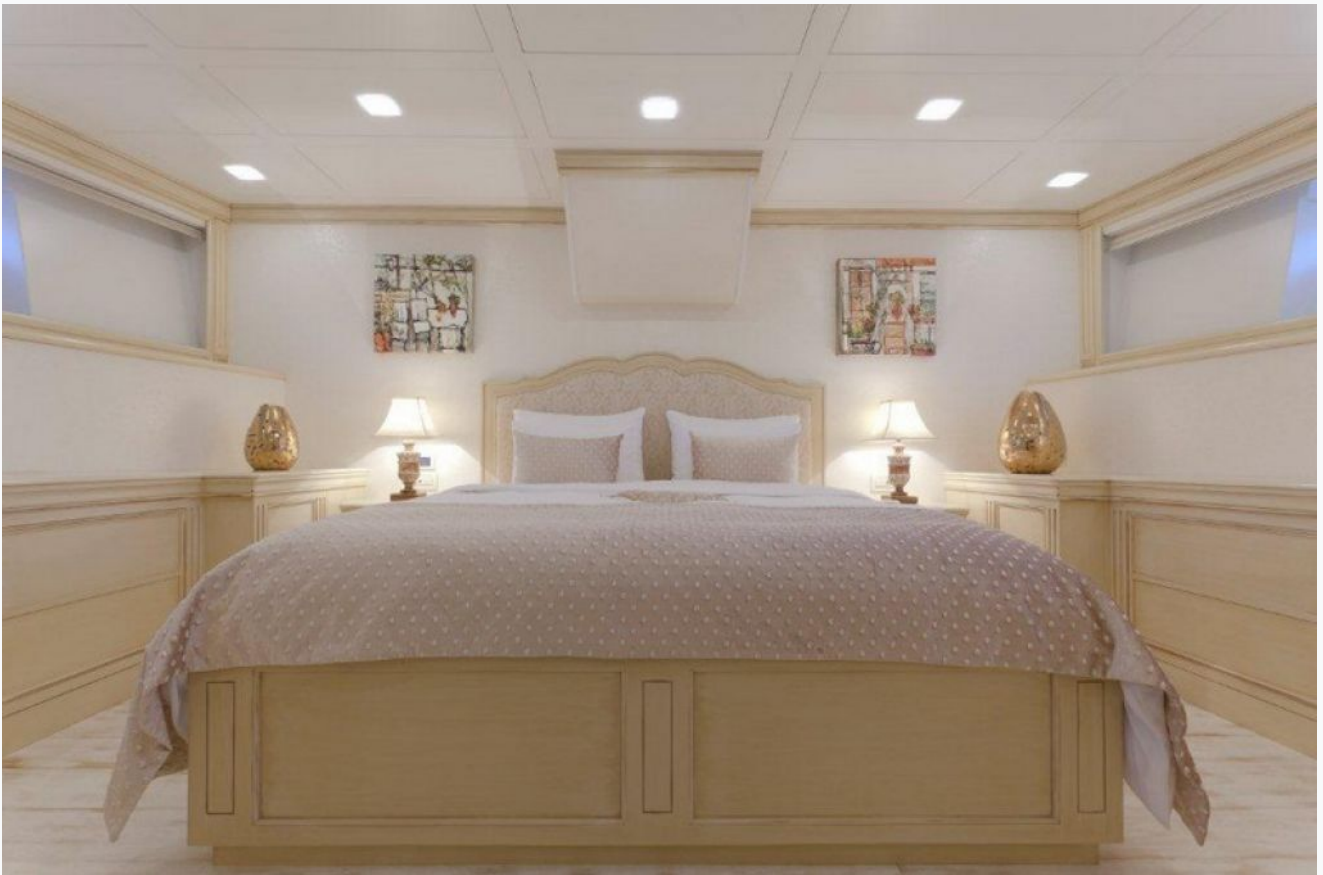


































## Specifications

<b>Built / Refit</b>	2011
<b>Builder</b>	MENGI YAY
<b>Base Port</b>	Bodrum
<b>Length</b>	35.0 m / 115.0 ft
<b>Beam</b>	7.15 m / 23.46 ft
<b>Draft</b>	0 m / 0 ft
<b>Speed</b>	20-22 Knots
<b>Main Engine(s)</b>	2 x 1875HP CAT C32
<b>Fuel Consumption</b>	300 lt at cruising
<b>Generator(s)</b>	2 x KOHLER 50KW 380V
<b>Hull</b>	Cold-Molded Epoxy on laminated mahogany
<b>Fuel Capacity</b>	13,000 LT~
<b>Water Capacity</b>	3,000 LT~



## Accommodation

<b>Cabins</b>	2 Master, 2 Vip, 1 Twin
<b>Guests</b>	10
<b>Crew</b>	6
<b>Bathroom</b>	Ensuite with shower cells
<b>Toilet type</b>	Electric vacuum flush
<b>Air-conditioning</b>	Yes
<b>A/C Use during night</b>	All night
<b>TV System</b>	In salon and all cabins, Sattelite TV
<b>Music System</b>	In salon, All cabins, Deck speakers
<b>Other Equipment</b>	Ice machine, Filter coffee machine, Service phone in cabins, Internet connection, CD/DVD player in each cabin

## Tenders & Toys

<b>Tenders</b>	4.75 Rib Jet Concept 140 HP Diesel Tender
<b>Water Toys</b>	2 X Wake Boards, 3 X Waterski for adults & kids
<b>Deck Equipment</b>	Jacuzzi on flybridge, Snorkelling equipment, Fishing tackle, Sun mattresses, Deck shower, Sea ladder

## Destinations & Prices

### Cruising Areas

Turkey, Dodacanese Islands, Athens, Ionian Islands, Cyclades

### Charter Prices

€49,000 per week (Low Season: May, October)

€59,500 per week (Mid Season: June, September)

€65,000 per week (High Season: July, August)

### Charter Terms

**The Charter Fee includes** the charter of the yacht with all its equipment in working order, tools, stores, cleaning material and basic consumable stores for engine-room, deck and cabins, etc., the crew's wages, food and the insurance of the yacht for marine risk and third party claims and the crew for employer's liability insurance.

**APA (Advance Provisioning Allowance):** The Charterer will be charged extra, at cost to the yacht, for all other expenses, which is covered by the APA , 20-40 % of the charter fee depending on the yacht and the charter period. These expenses include fuel for the yacht, fuel for the ski-boats or other tenders, food for the charterers, wines, beers, spirits and soft drinks for the Charterers, other consumable stores, berthing dues and other harbour charges away from the yacht's own berth, hire costs of special equipment placed on board at the request of the Charterer.

**Crew's Gratuity** is extra and usually 5-10 % of the Charter Fee.

